

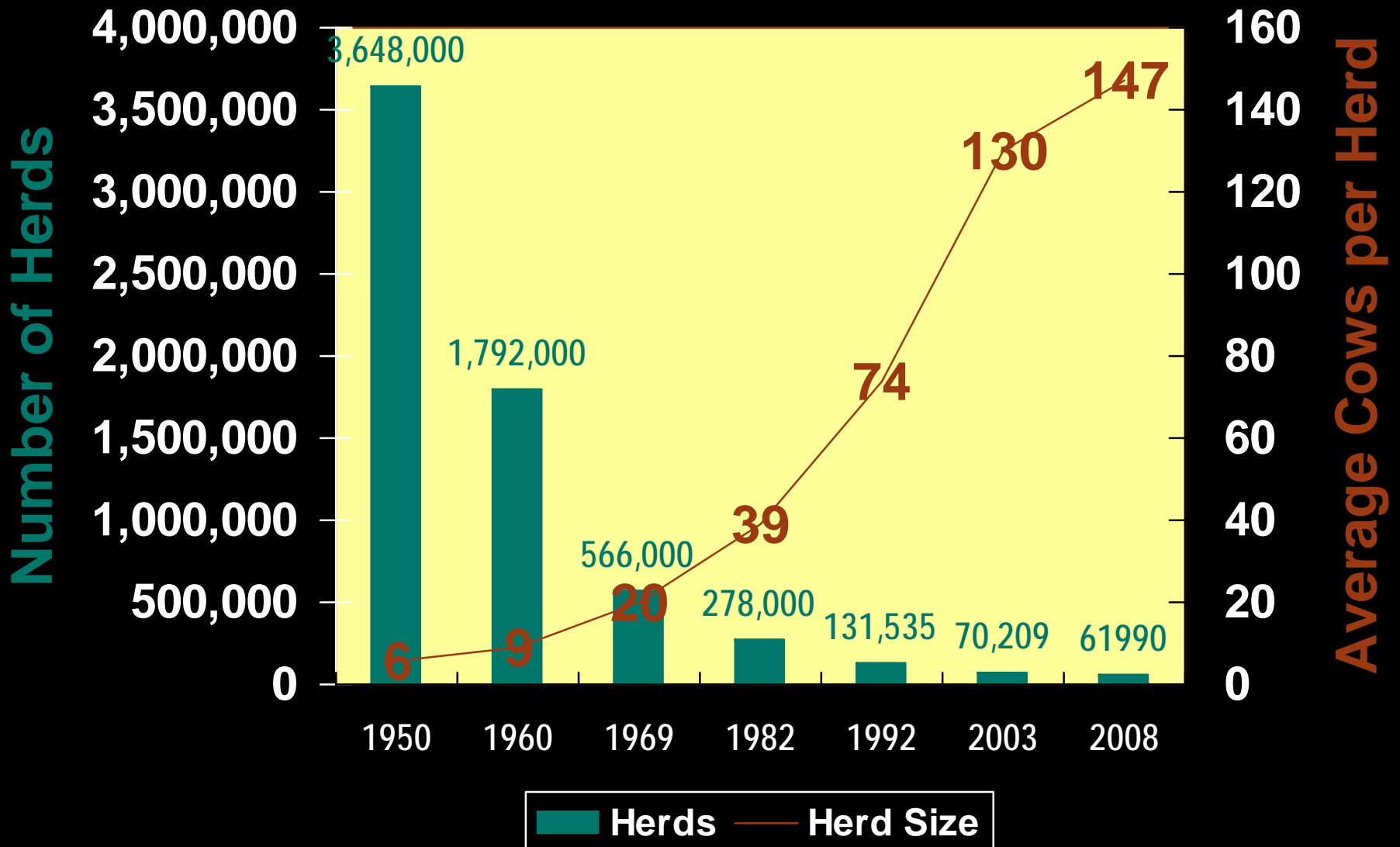
# Session 1. CRI Genex Overview



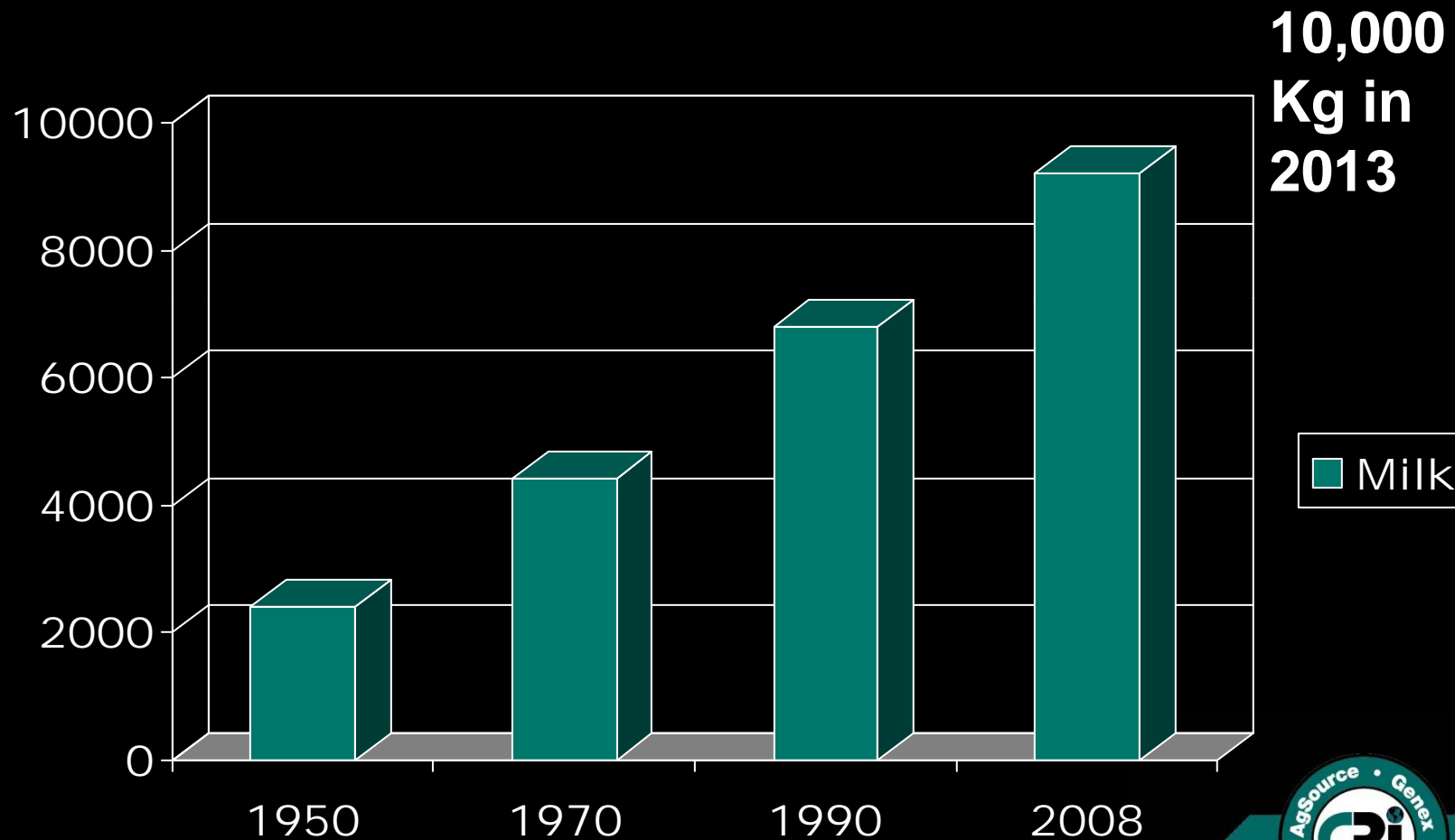
*your* **Profit** *partner*<sup>™</sup>

***World Bank Workshop  
Anand India***

# US Dairy Herd Trend



# Milk per cow in KG



your **Profit** partner™

- ▶ 5 Major AI centers account for more than 90% of semen produced and sold in the USA.
  - 3 Cooperatives
  - 2 Privately owned



your **Prof't** partner™

# Beef AI Centers in the US

- ▶ 41 Beef and Custom Collection Centers
- ▶ Primarily produce semen for beef producers, domestic and International.
- ▶ Important market: to produce semen for beef breeders for use in their own herds
  - Plus – bull owners who wish to sell semen directly.



your **Prof't** partner™

# NAAB

## National Association of Animal Breeders

- ▶ Trade Association
- ▶ Code of ethics
- ▶ Unified “voice.”



your **Prof't** partner™



- ▶ Auditing Service
- ▶ Semen identification
- ▶ Bull health testing
- ▶ Semen QC Procedures



your **Prof't** partner™



- ▶ Policy determined by a Board of Directors elected by the membership.
  - Primarily for health testing issues



your **Prof't** partner™



# Health Certification Program

- ▶ Bulls tested for diseases that can be sexually transmitted
  - Brucellosis
  - Leptospirosis
  - Trichomoniasis
  - Campylobacteriosis
  - BVD
  - TB



your **Profit** partner™

# Cooperative Resources International CRI

- ▶ Provide products and services as effectively as possible to maximize the profitability of members and customers world wide while maintaining a strong cooperative.



your **Prof't** partner™

# Cooperative Resources International

- ▶ *A unique structure as an agricultural holding cooperative*



your **Prof't** partner™

- ▶ .. a Holding Cooperative by producer



- ▶ Three subsidiaries:

- AgSource Cooperative Services
- Minitube of America (MofA)
- Genex Cooperative (with Central Livestock)

- ▶ Unique functions managed by the subsidiaries

- Marketing, Product Development, Production

- ▶ Similar functions managed by CRI

- Finance, PR, Information Technology, International, Support Services

# *MiniTube of America*



- ▶ **Technology for breeding all species**
- ▶ **Service and testing**
- ▶ **Embryo Transfer technology and services.**
- ▶ **International Center for Biotechnology**



your **Prof't** partner™

# Genex Cooperative

- ▶ Cattle breeding organization within CRI
- ▶ 23,000 member – owners
- ▶ 735 employees
- ▶ 400 professional inseminators



your **Profit** partner™

# *Central Livestock, part of Genex...*

- ▶ **7,800 members**
  - Upper Midwest  
**Auction Sales:**
    - Cattle 638,855
    - Sheep 124,765
    - Hogs 564,342



your **Prof't** partner™

# Products and Services

- ▶ Cattle Genetics - semen & embryos
- ▶ Insemination service
- ▶ Mating appraisal service
- ▶ Custom Collection and marketing
- ▶ Cryogenic storage



your **Prof't** partner™



# Products and Services

- ▶ Milking equipment and supplies
- ▶ Feed, manure storage equipment
- ▶ Insemination supplies
- ▶ Heat detection aids
- ▶ Liquid Nitrogen



your **Prof't** partner™





# CRI Infrastructure

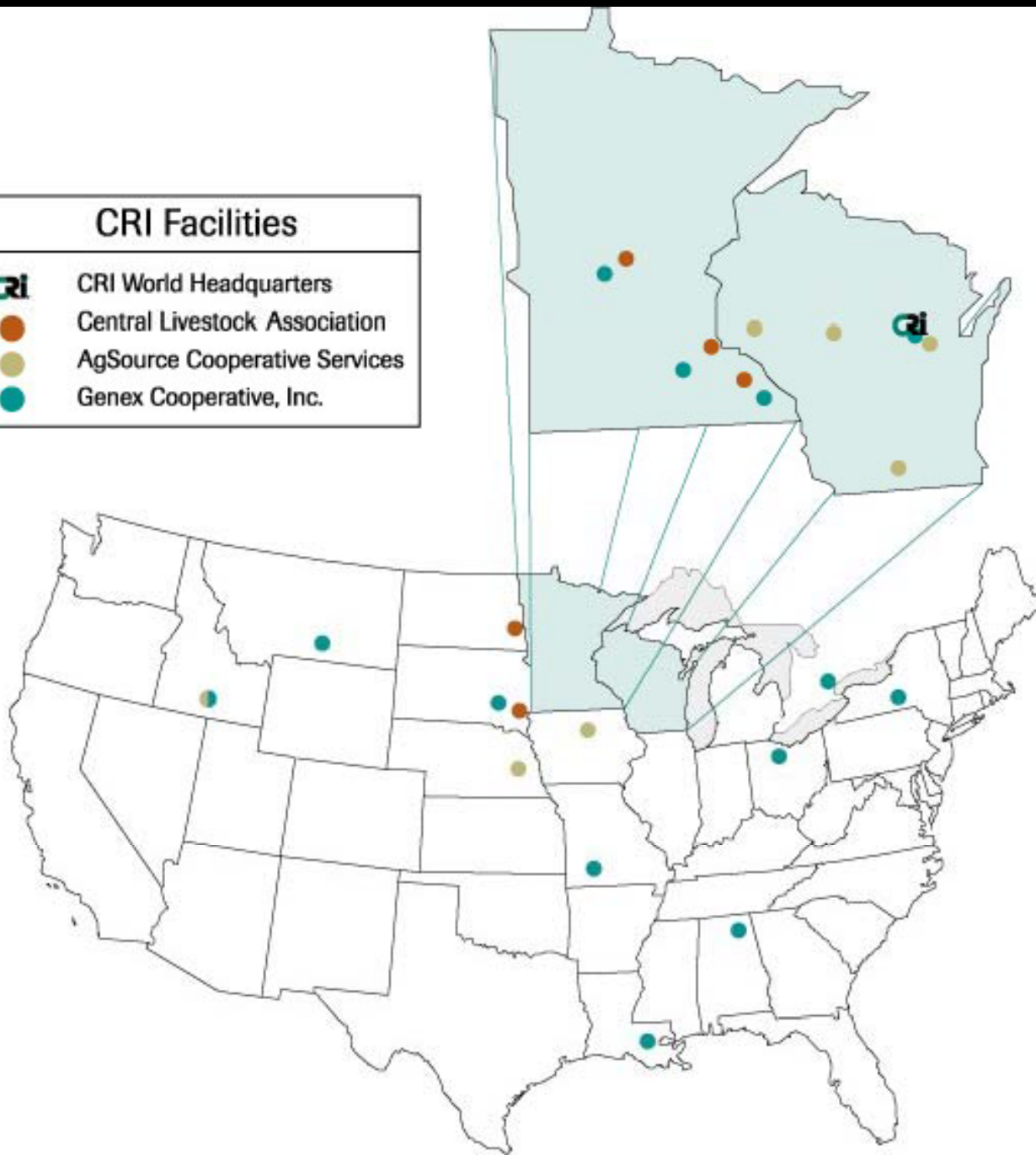
- ▶ House ~ 1,800 bulls
  - in 7 different states, and Canada
- ▶ Genomic test 275 dairy bulls and progeny test 40 beef bulls annually
- ▶ House ~ 465 heifers and calves for embryo production.



your **Prof't** partner™

## CRI Facilities

-  CRI World Headquarters
-  Central Livestock Association
-  AgSource Cooperative Services
-  Genex Cooperative, Inc.



partner™

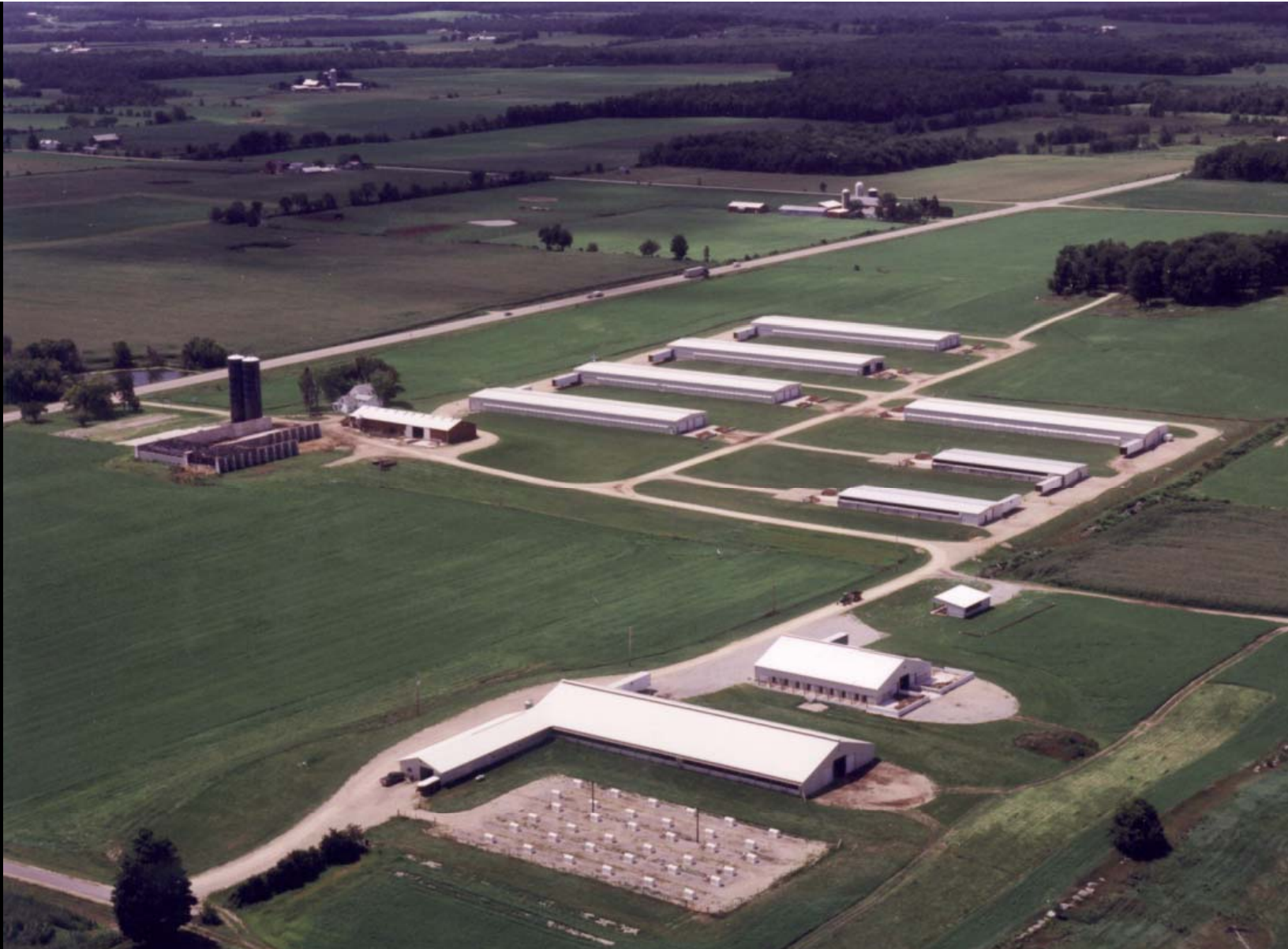


Central Livestock

your **Profit** partner™

# Genex Production *Shawano, Wisconsin*





Shawano WI: Genesis herd to create new heifers and bull calves.



your **Profit** partner™



Ithaca, NY: Dairy bulls and ST sorters

Tiffin, OH: Dairy Bulls and rearing of new genomic sires, heifers.







Strafford, MO 60 Bulls

# Production Division Responsibilities

## ▶ Livestock Operations

- Bull housing and management
  - Semen collection
- Embryo Program/Genesis herd operations/ rearing calves and heifers

## ▶ Laboratories

- Semen production
  - semen processing and QC

# Production Division: By the Numbers

- ▶ **Genesis** Calves & heifers 893
- ▶ **Recipients** 689
- ▶ **Mounts for Bulls** 84
- ▶ **Total animals** (including dogs) 2,183



your **Prof't** partner™

# Production Division: By the Numbers

- ▶ 12.5 million Frozen straws
- ▶ 62,000 Collections
- ▶ 16 million kg Manure



your **Prof't** partner™

# Production Division

- ▶ Crop Production – 555 Hectares
- ▶ 54 Barns



your **Prof't** partner™

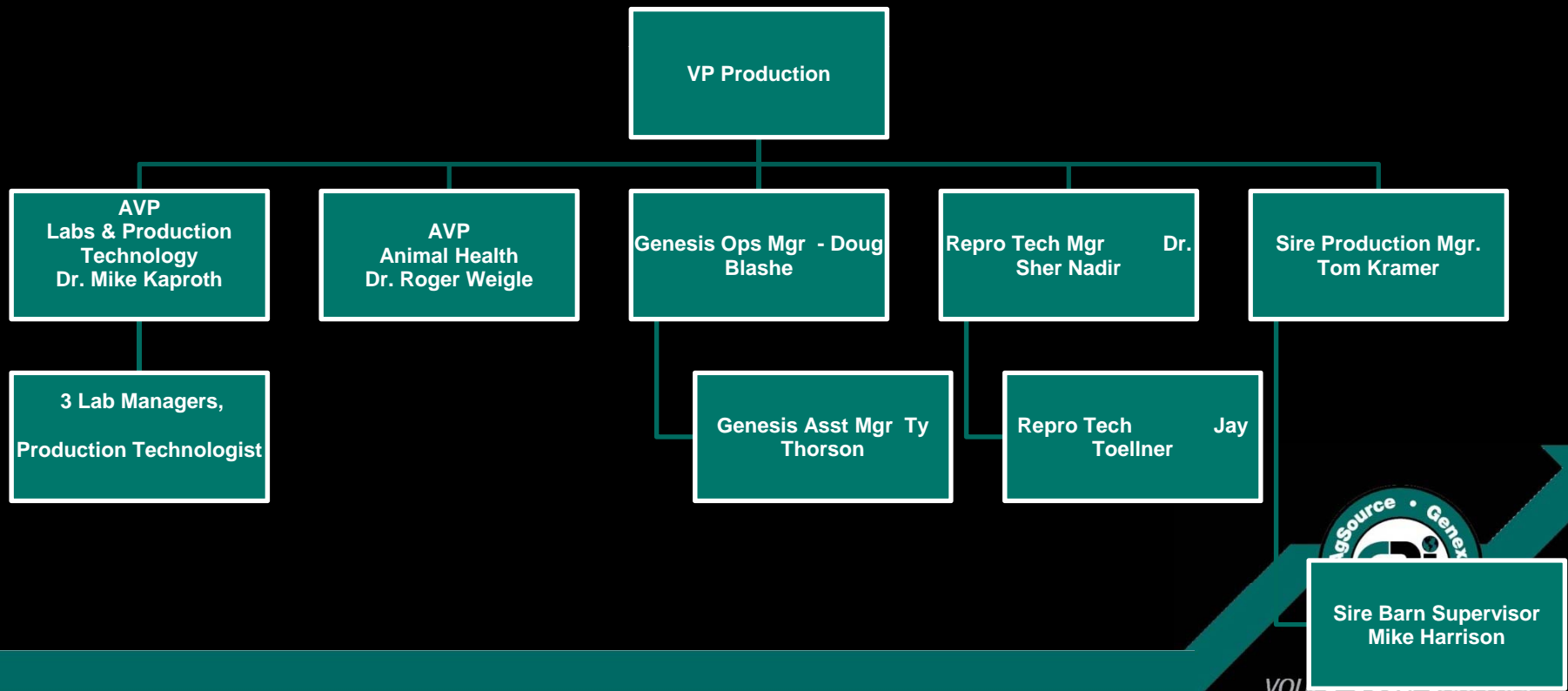
# Production Division: By the Numbers

- ▶ 300,000 Diagnostic tests
- ▶ 800 Baby calves
- ▶ 1,200 Embryos



your **Prof't** partner™

# Production Division: People

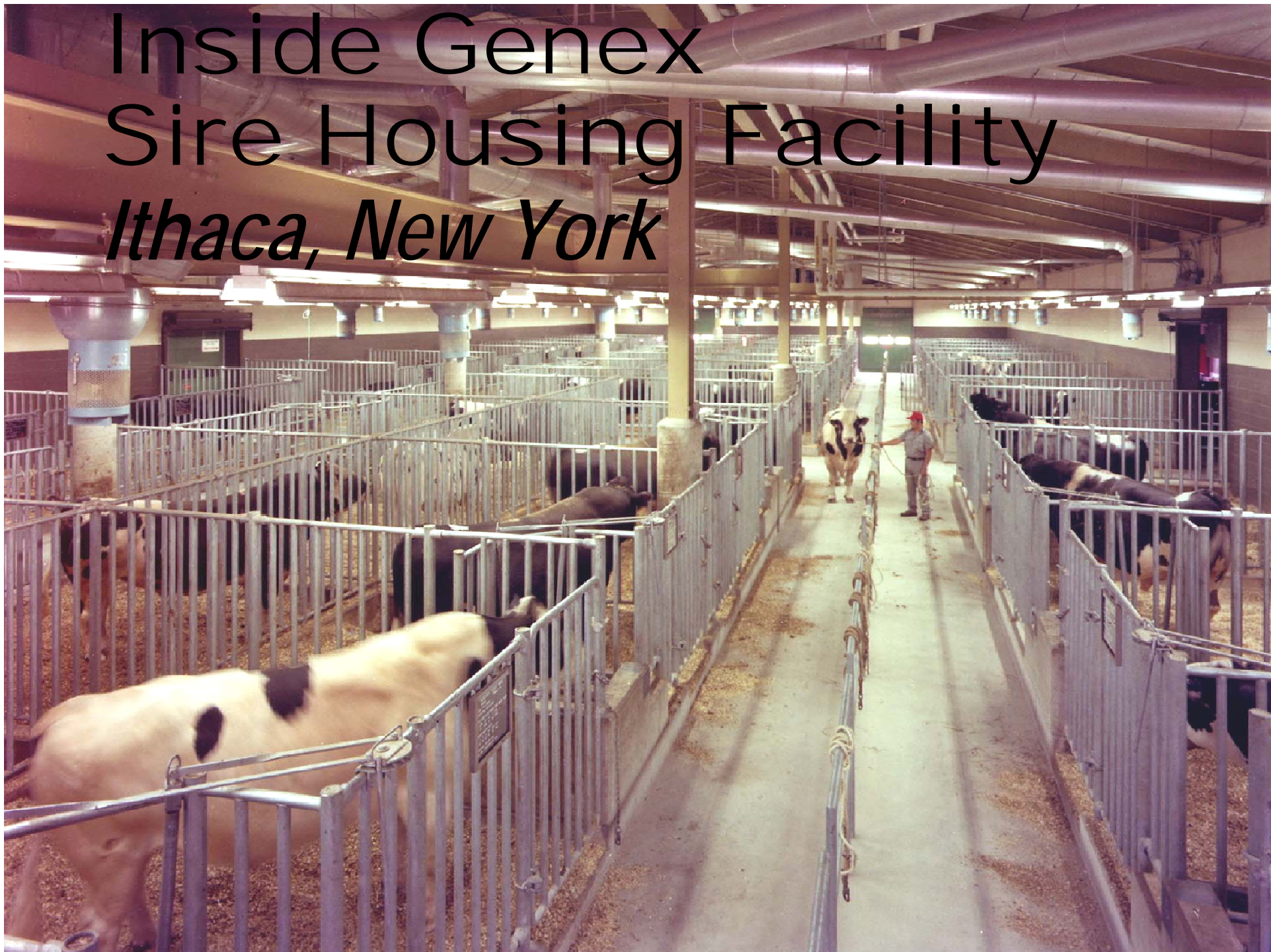


# Inside Genex Sire Housing Facility *Shawano, WI*





# Inside Genex Sire Housing Facility *Ithaca, New York*



...AND Three Facilities in  
Beef Ranching States:  
*Missouri, Montana, South Dakota*



# CRI Genesis Program

- ▶ Genetics program using MOET scheme.
  - Embryos from elite matings are purchased and placed into health controlled recipient heifers.



your **Prof't** partner™

# CRI Genesis Program

- ▶ Resulting calves are raised to puberty.



# CRI Genesis Program

- Bulls transferred to the progeny test program.
- Females are flushed and bred.
  - Transferred to a cooperator herd where they calve and produce milk for the cooperating dairy.



your **Prof't** partner™

# CRI Genesis Program

- ▶ Nutrition program of the bulls is controlled more closely.
  - Come into puberty more rapidly
  - Produce significantly more sperm at a year of age compared to other bulls.
    - ~ 13% more sperm per week.



your **Prof't** partner™

