

Information Network for Semen Production Resource Management

(INSPRM)

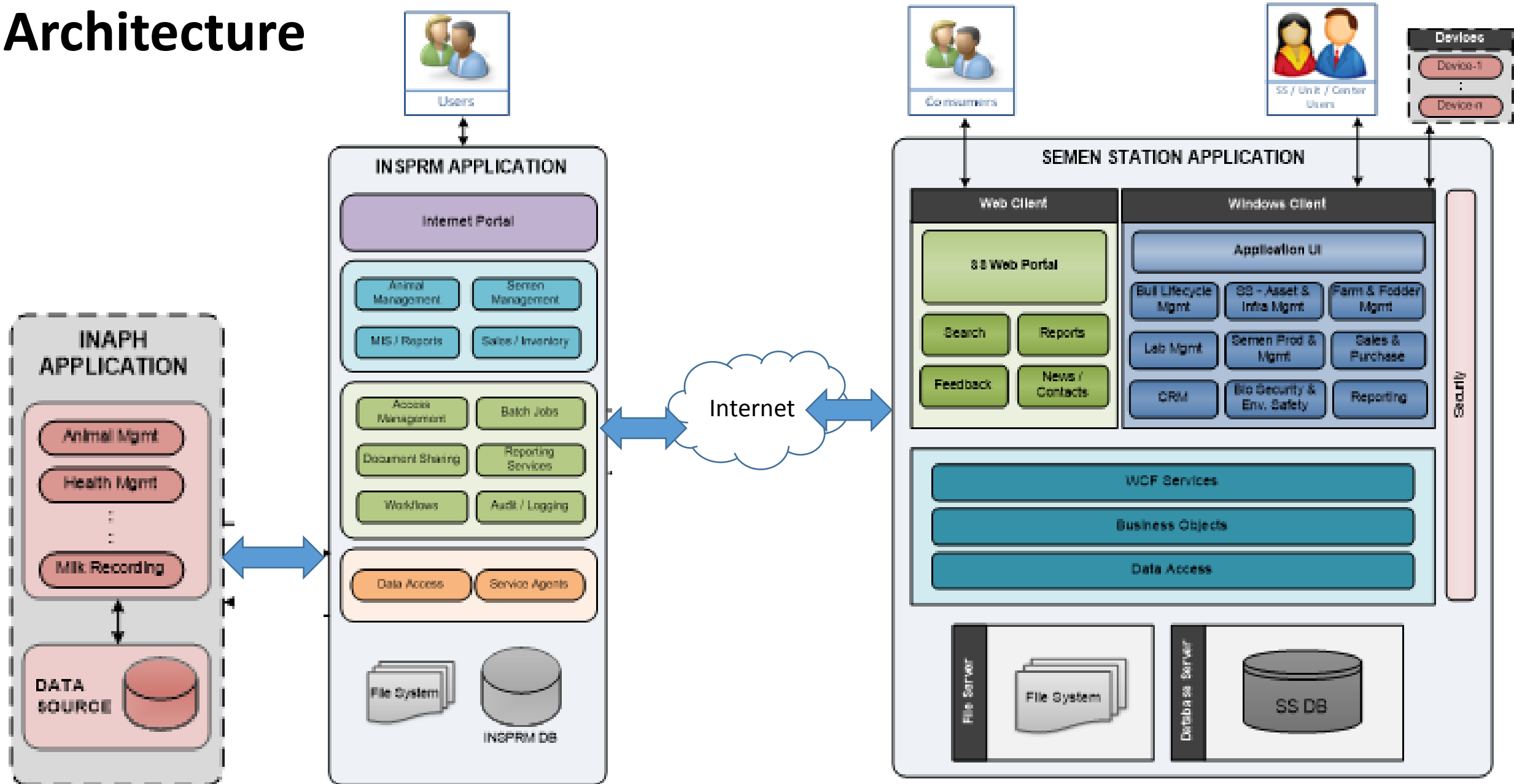
50 *Years of transforming
lives through dairying*



INSPRM

- NDDDB is developing a **unified Semen Station Management Software** along with **Centralized National Semen Production Management Portal** integrated with **INAPH**. (INAPH is a field IT application that facilitates the capturing of real time reliable data on **Breeding, Nutrition and Health Service** delivered at Farmer's Doorstep)
- The solution based on **Microsoft Technology Stack** covers **Core Operations** of Semen Stations to support Process Standardization, Improvements and Control.
- The solution will be deployed across all semen stations as a part of National Dairy Plan I.
- We plan to make it operational early next year.

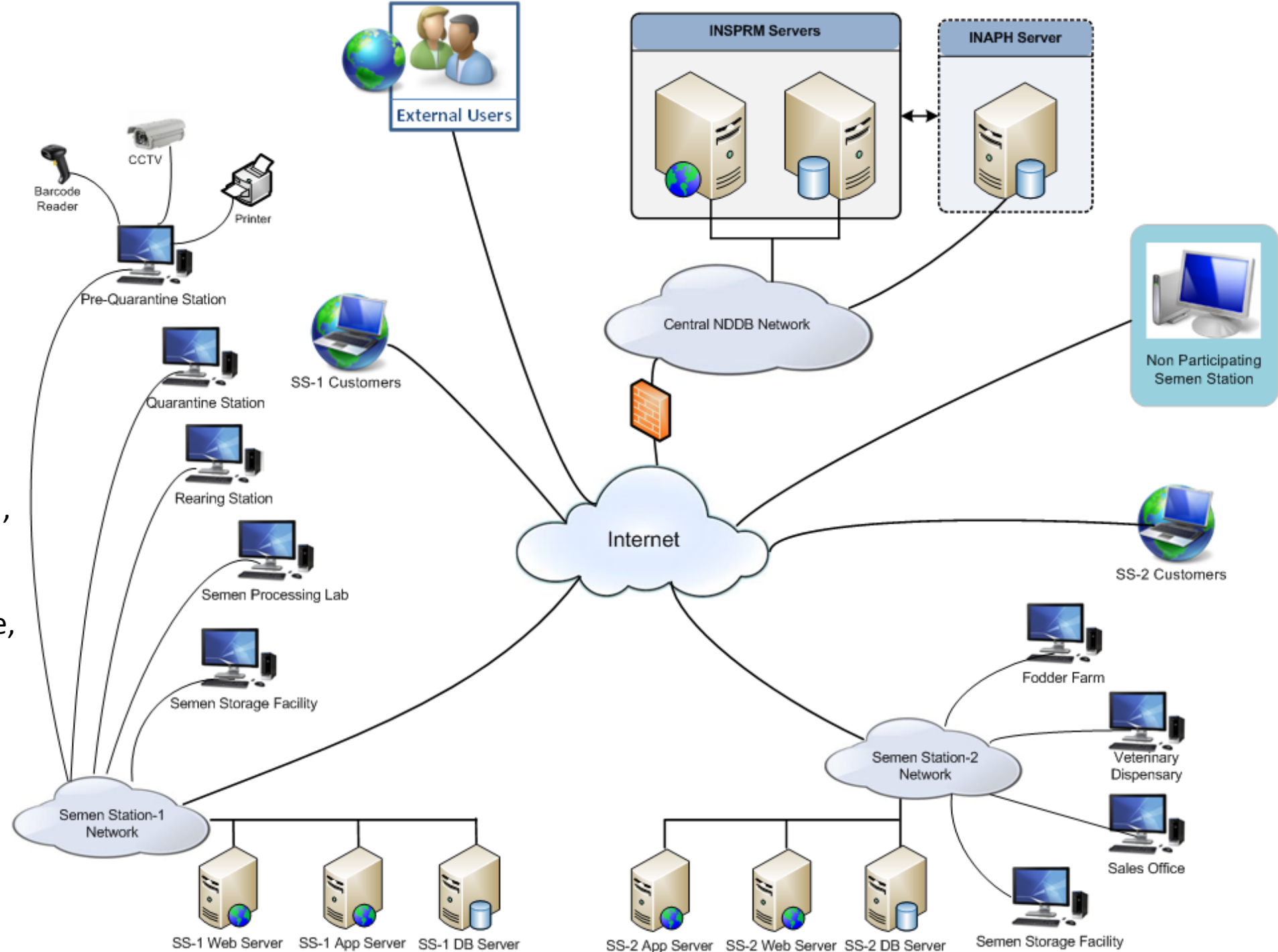
Architecture



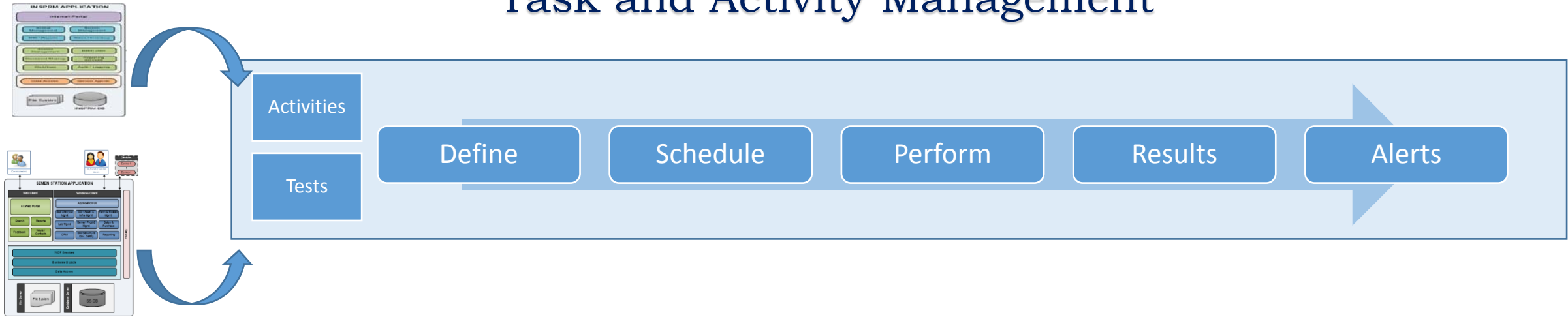
Flexible Architecture

The system Supports

- Multiple Locations
- Multiple Production, Sales, Quarantine, Rearing, QC Stations , fodder farms.
- Common Sales Office, Quarantine, Rearing Stations, QA stations for Multiple Semen Station

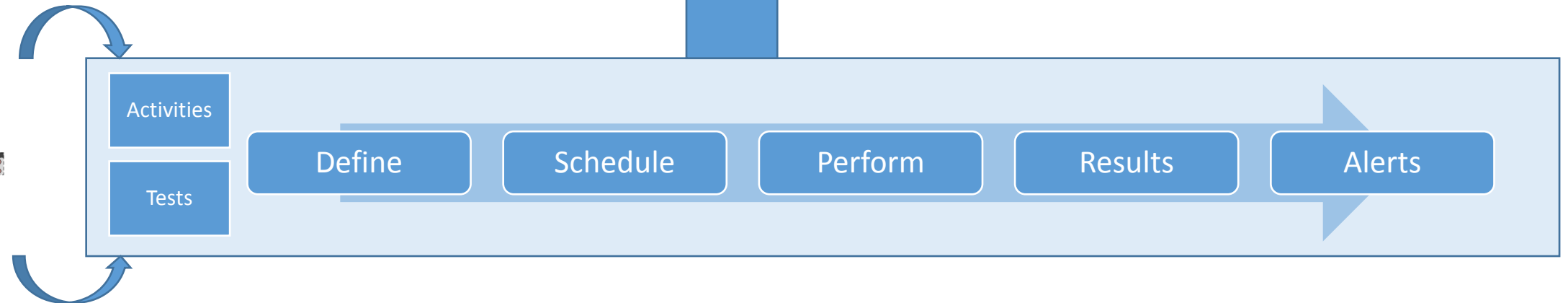
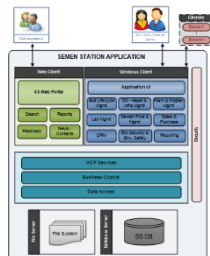
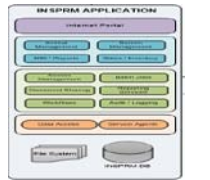
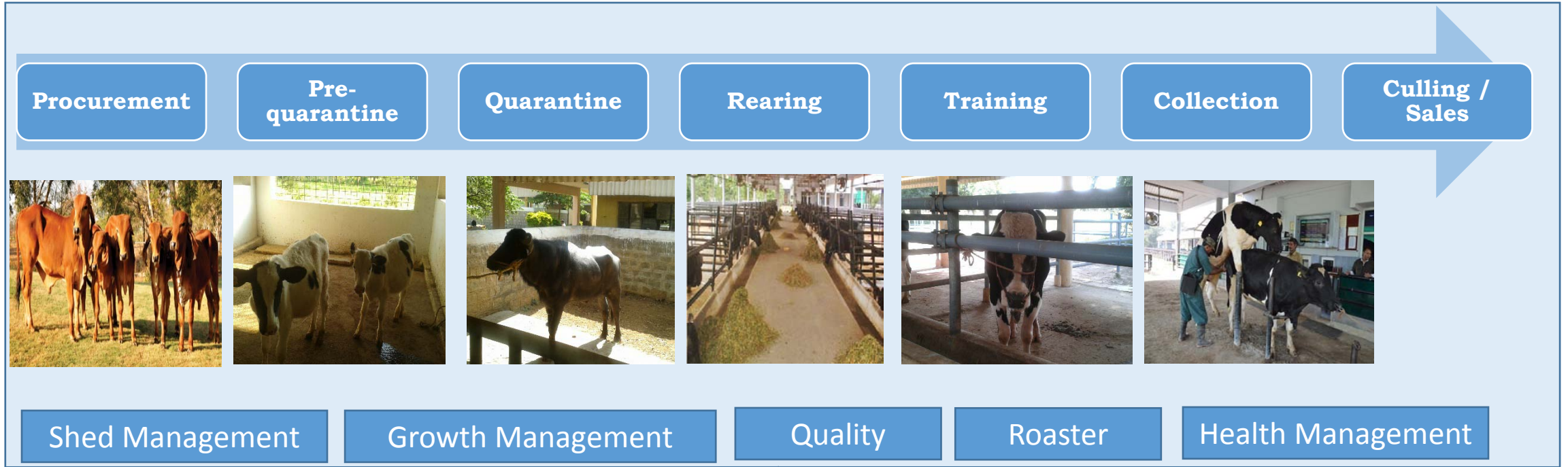


Task and Activity Management

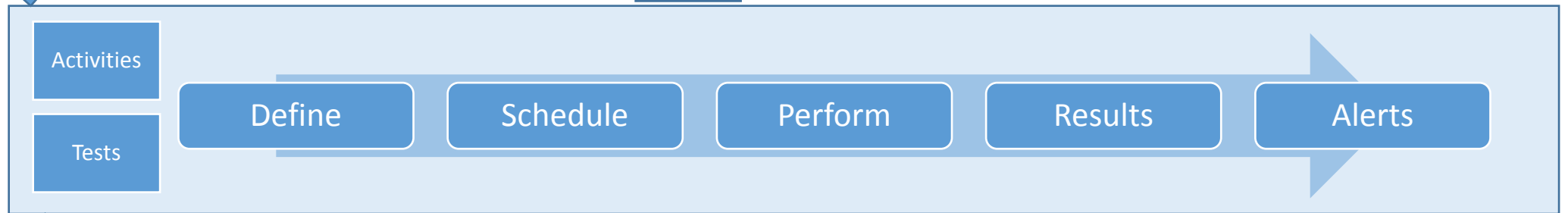
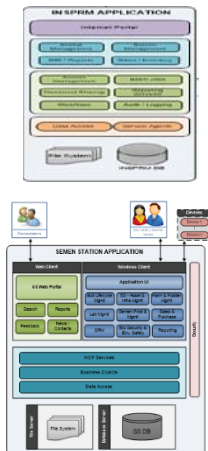


Description	Actor	Actor	Actor	Notification
Target	Resources	Resources used	Results Analysis	Alerts
Result Parameters	Frequency	Action Details	Pending Activities / Tests	Escalation Mechanism
Actions based on Results				

Bull Management



Semen Management



Inventory Management

InventoryView X

Breed: --Select-- SS Bull Id: --Select-- Status: --Select-- Search

Container0 Container1 Container2

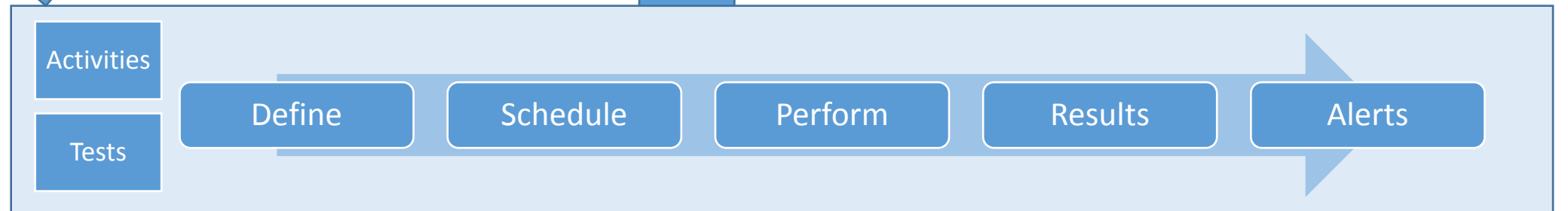
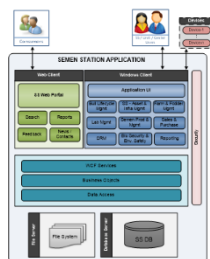
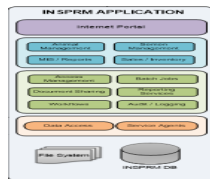
Container3 Container4 Container5

Bull	Batch-Ejaculation-Split	Doses	Is Reserved	Is in Quarantine	Reserved For
SAG-HF-123	284-14;1;1	150	N	N	NA
SAG-HF-123	284-14;2;1	150	Y	N	GCMMF
SAG-HF-321	284-14;1;1	150	N	Y	NA
SAG-HF-231	284-14;1;1	150	Y	N	GCMMF

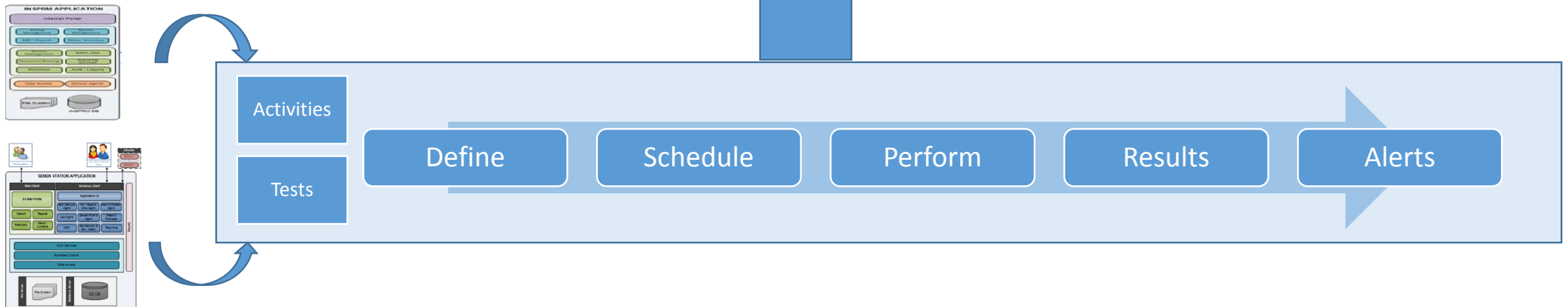
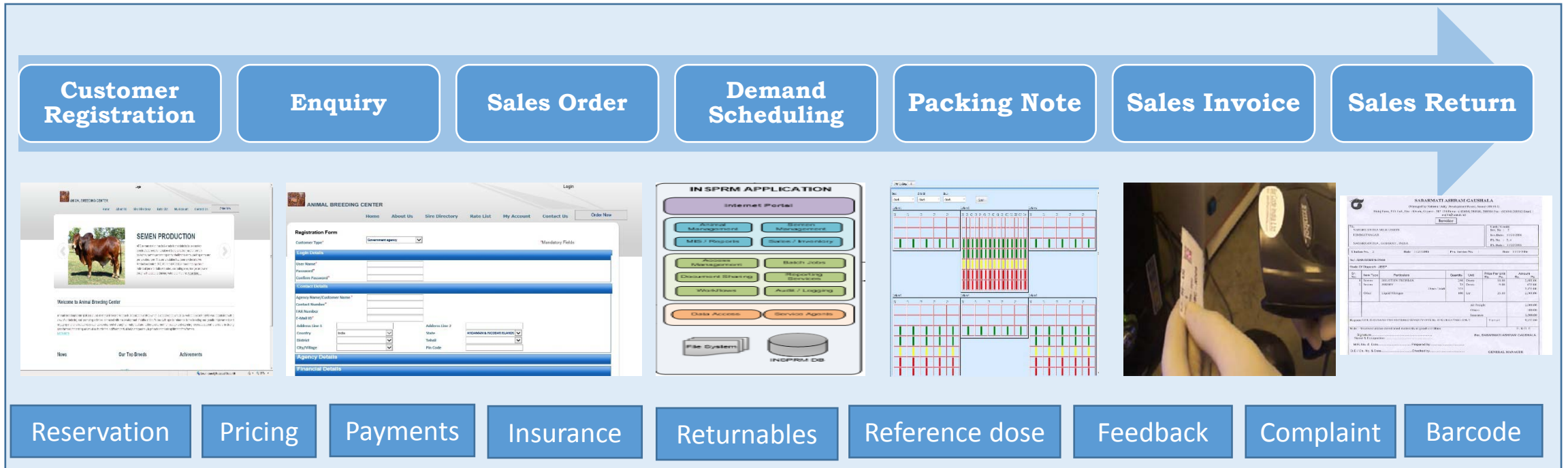


- Fine Grained traceability of Inventory at every Level.
- Intelligent, configurable goblet / canister movement in a given container.
- Barcode Integration at every Transaction level.

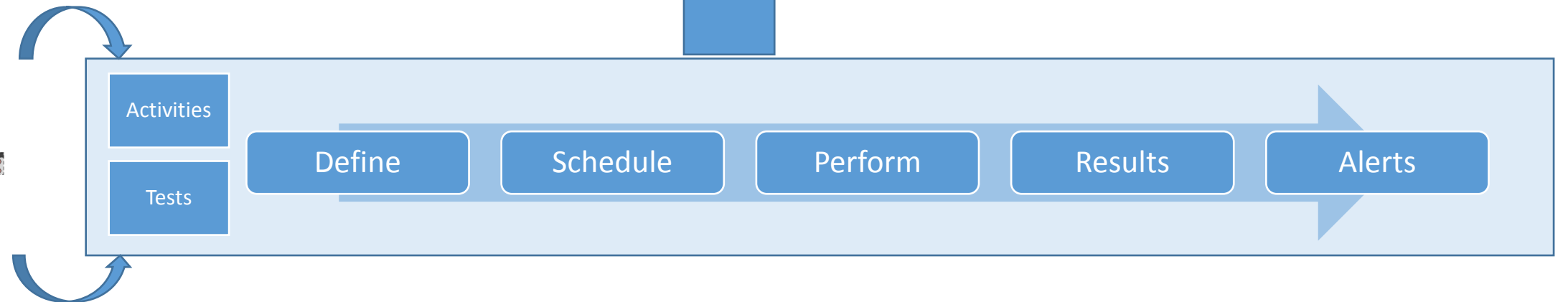
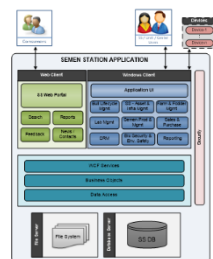
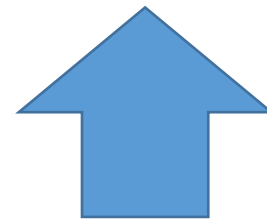
Farm & Fodder Management



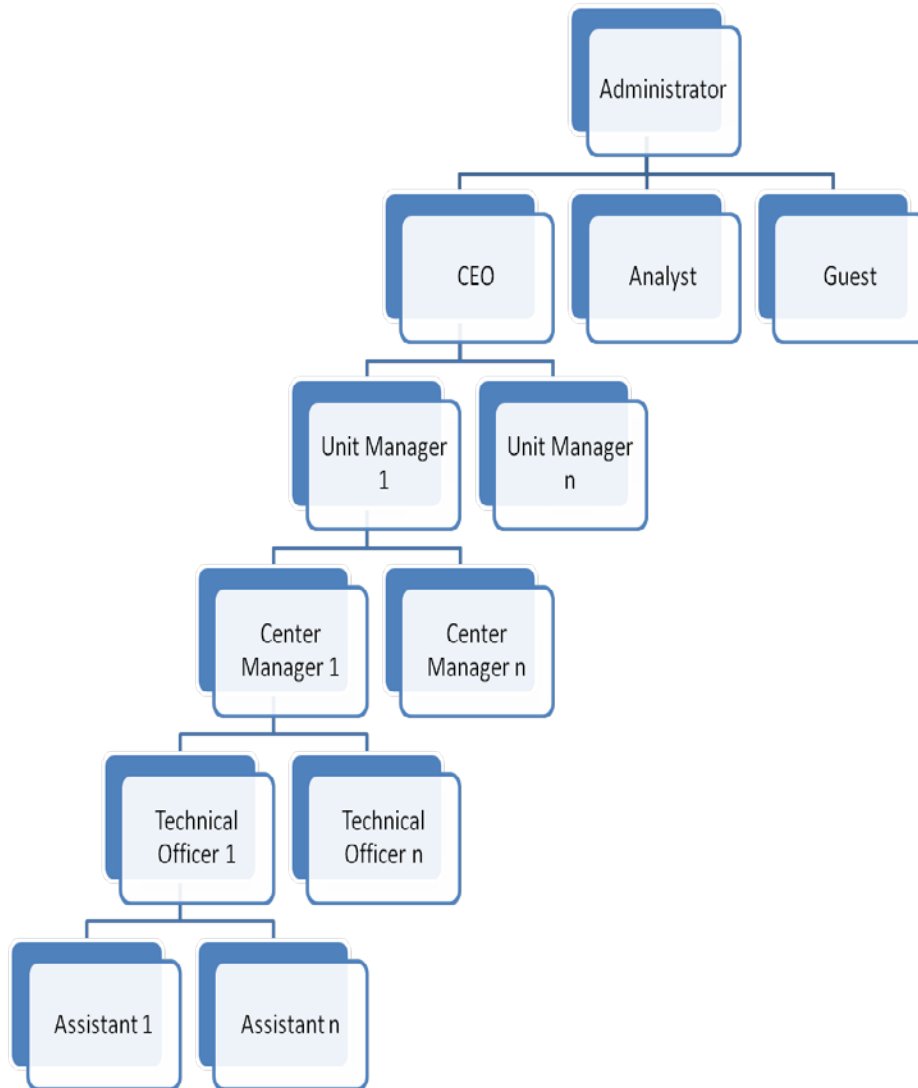
Sales Management



Bio-Security Management



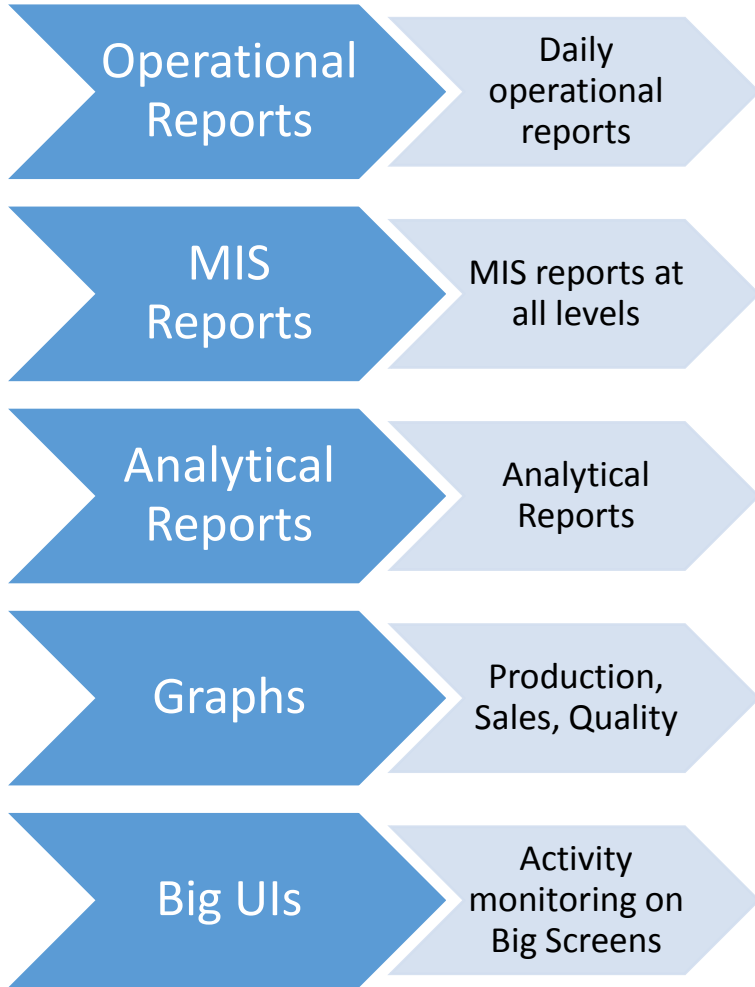
Access Hierarchy



- Multiple Access Level based on Roles and Requirements.

Administrator
General Manager
SS Manager
Semen Collector
Shed in-charge
Lab in-charge
Lab technicians
Sales Manager
Sales team
Semen Storage facility In-charge
Farm Manager
Farm supervisor
Store Head
Section Head
Central Store Head
Purchase Officer
Auditor
Account officer
Section In-charge
Bio security team
Bio security supervisor
Center In-charge
Asset and Infra structure manager

INSPRM & SSMS Reporting



- Role and Hierarchy based Reporting covering one or more Functional Area.
- Provides Decision Supports as well as Operational Support based on the requirements .
- Provide Alerts to take action in Real Time.

Bull wise Production Details					
Bull	CB-379	Collector	Co-RPT		
Vol.	5.0	Conc.	934		
Mot.	70	Remarks			
Exp.	234	Prod.	227		
352-2013	PC1	3724	PC2	5483	9207

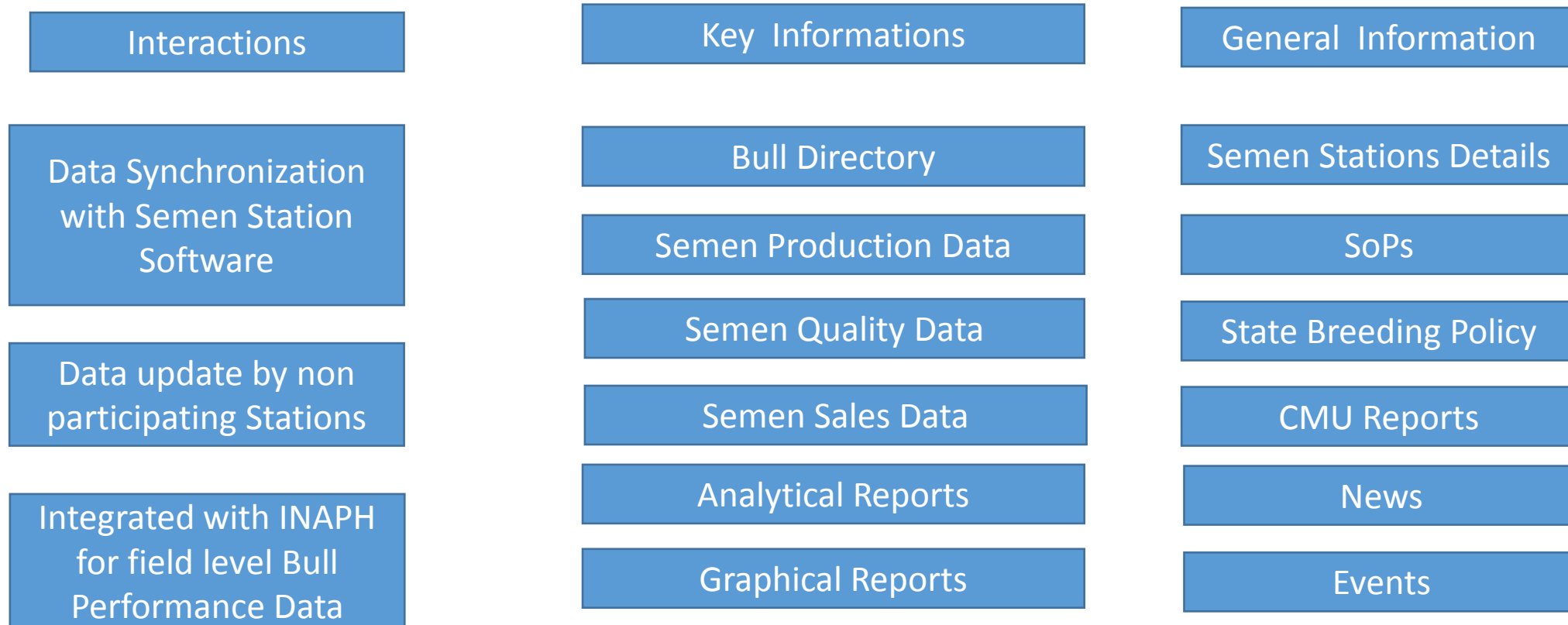
Bull No	Date/Time	Collector	Enj. Number	Vol	Mot	Conc	Status	Exp. Dose	Produce Dose	Discard Reason
ABC-123	Apr-14	XXX	1	10	70%	10.5	In Progress	100	99	BBBBBBB

Bull No	Enj. Number	Vol	Conc	Expected Doses	Produced Doses	Collector	Status
ABC-111	1	10	30	100	80	XXXX	●
ABC-112	2	10	30	100	80	YYYYY	●
ABC-113	1	30	30	100	80	ZZZZZ	●

Breed	AAA	Breed	Total Collection	Collector	XXXX
No. Of Bulls under Roster	20	Breed 1	100	Bulls under Roasted allotted to him	20
No. Of Bull Collected	10	Breed 2	200	Bulls semen collected	10
No. Of Enj Taken	100			Ejaculates taken	100
No. Of Enj discarded	10			Ejaculate Discarded	10
No. Of Expected Das.	900			Discard %	900
No. of Doses produced	890			Average Volume	890

Central National Portal

A Centralized Portal for collating data from multiple Semen Stations to provide a County Level authentic Data on Semen Production and Management is being developed.



Thank You

