



IMPLEMENTATION OF INAPH MODULE IN SABAR UNION

About SABARKANTHA Union

Chairman : Shri. Jethabhai P. Patel

Managing Director : Dr Babubhai M Patel

- Established in **1964** on AMUL pattern.
- No. of Dairy Co-operative Societies: **1915**
- Total members : 3,67,234
- Average Milk procurement/day : **18.44 Lakh Kg** & Current Year: **25.13 Lakh Kg**
- Peak collection : **23.21 Lakh Kg** & Current Year:
- Plant capacity : **15 LLPD**
- Cattle feed plant: **950 MT per day,**
- Turn over : **3630 Crore**
- No. of veterinary centres :**13**
- Total field veterinarians working in the Union :**100**
- Total AI Technician working with Union : **365**
- ISO 9001-2008,ISO14001-2004,ISO 22000-2005 and HACCP certifications.

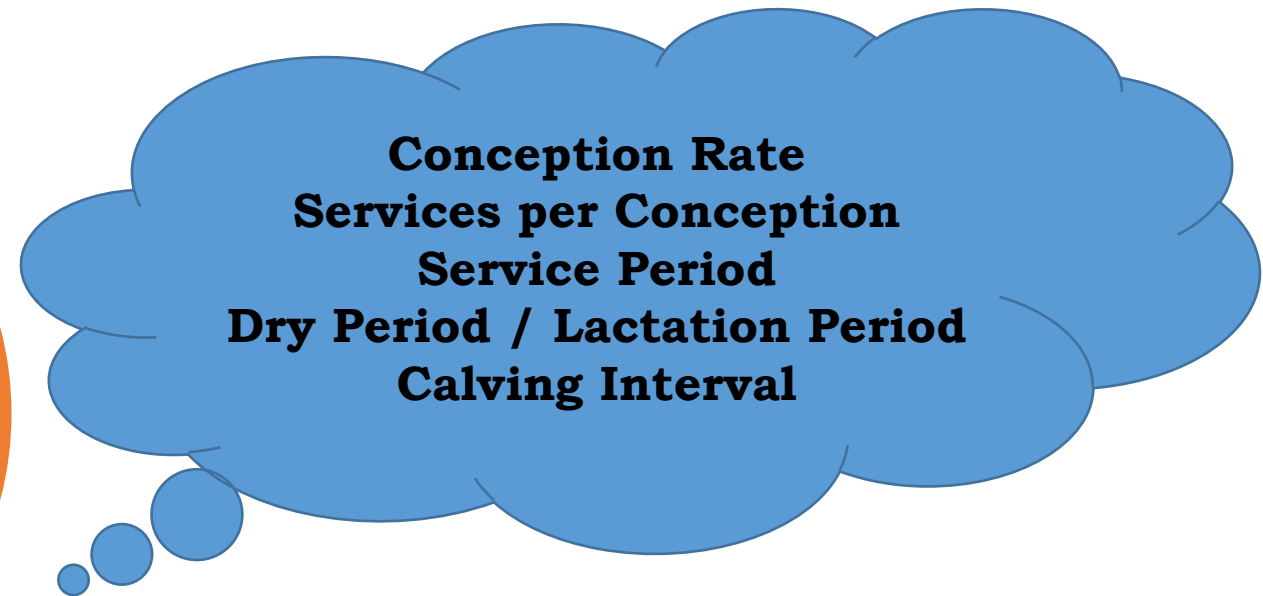
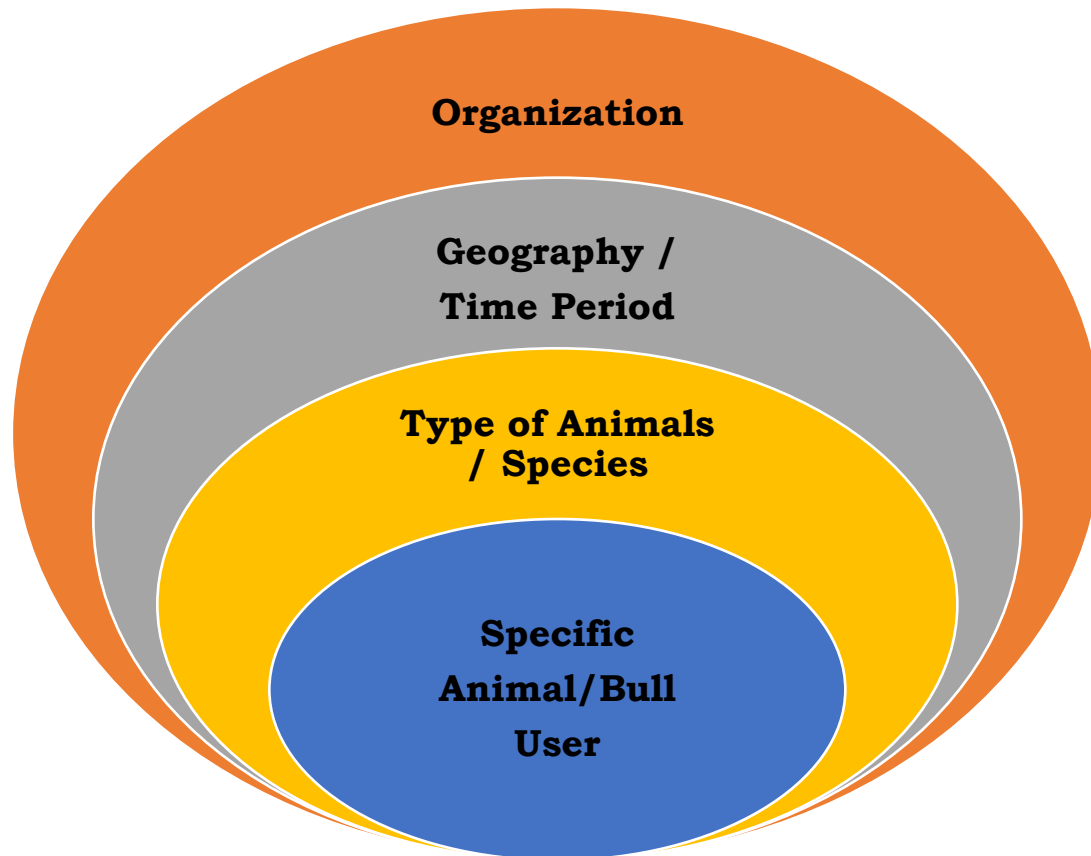
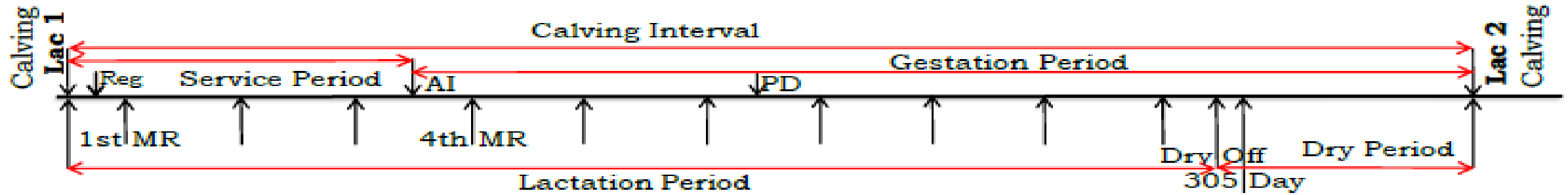
INAPH IMPLEMENTATION -TIMELINE

- June to November 2011- 745608 cattle and buffaloes in the Union where ear-tagged under the Govt. of Gujarat sponsored scheme. All the ear-tagged animals were registered through the INAPH module.
- Two day training on INAPH provided by NDDB during November 2011 to all the 100 veterinarians of the Union.
- 100 net books were provided to all the veterinarians working in the Union for the purpose.
- INAPH health module deployed in the union from December 2011 and breeding module in April 2012.
- 250 laptops were purchased by Union and provided to AI Technician on monthly installment basis without interest.

BENEFITS OF HEALTH MODULE

- Identify the key areas of concern and focus on priority
- Documentation of the various diseases prevalent in the area
- Prudent purchase of medicines based on disease incidence
- Location and movement of the animal with its owner can be traced.
- Health information can be used for insurance of animals
- Animal Health card can be generated which records all interventions
- Planning & Implement Mass Vaccination and Mass Deworming programs more efficiently.

Breeding Cycle



BENEFITS OF BREEDING MODULE

- Easy to evaluate and monitor the activities performed by the AITs based on Conception Rate, No of AIs per Conception etc.
- Identification of Repeat Breeders and remedial measures can be undertaken through infertility camps to treat these animals.
- Evaluate Bull performance
- Best tool for Bull Production/Progeny Testing Programs
- Identify elite animals on the basis of lactation Yield, Fat etc.
- Details of animals can be viewed from anywhere in the world through the web.



SABARKANTHA DISTRICT COOPERATIVE MILK PRODUCERS UNION LTD



**Progress of Online
Data entry (INAPH)**

No of AITs using INAPH

Year	General AI Project	Progeny Testing Program	Total
2011-12	10	50	60
2012-13	25	50	75
2013-14	66	50	116
2014-15	94	50	144
2015-16	160	50	210
2016-17	204	50	254

Artificial Insemination

Year	General AI Project	Progeny Testing Program	Total
2010	2	23596	23598
2011	71579	31951	103530
2012	166131	45004	211135
2013	188708	50503	239211
2014	198512	52291	250803
2015	217661	60163	277824
2016	283077	66708	349785

Pregnancy Diagnosis

Year	General AI Project	Progeny Testing Program	Total
2010	7168	0	7168
2011	14298	9569	23867
2012	22450	75060	97510
2013	27757	115288	143045
2014	27391	118331	145722
2015	31495	127848	159343
2016	34262	151263	185525
2017	3357	7489	10846

Calving Transaction

Year	General AI Project	Progeny Testing Program	Total
2011	5443	8953	14396
2012	28746	13191	41937
2013	63091	18005	81096
2014	71456	18465	89921
2015	72942	20463	93405
2016	68947	23491	92438

Female Calves Registered

Year	General AI Project	Progeny Testing Program	Total
2011	311	3771	4082
2012	12853	5648	18501
2013	24945	7648	32593
2014	25541	7561	33102
2015	27001	8576	35577
2016	25855	10038	35893

Animal Put to MR

Year	General AI Project	Progeny Testing Program	Total
2010	0	989	989
2011	0	1064	1064
2012	37	1327	1364
2013	6	1651	1657
2014	451	2313	2764
2015	842	3380	4222
2016	92	278	370

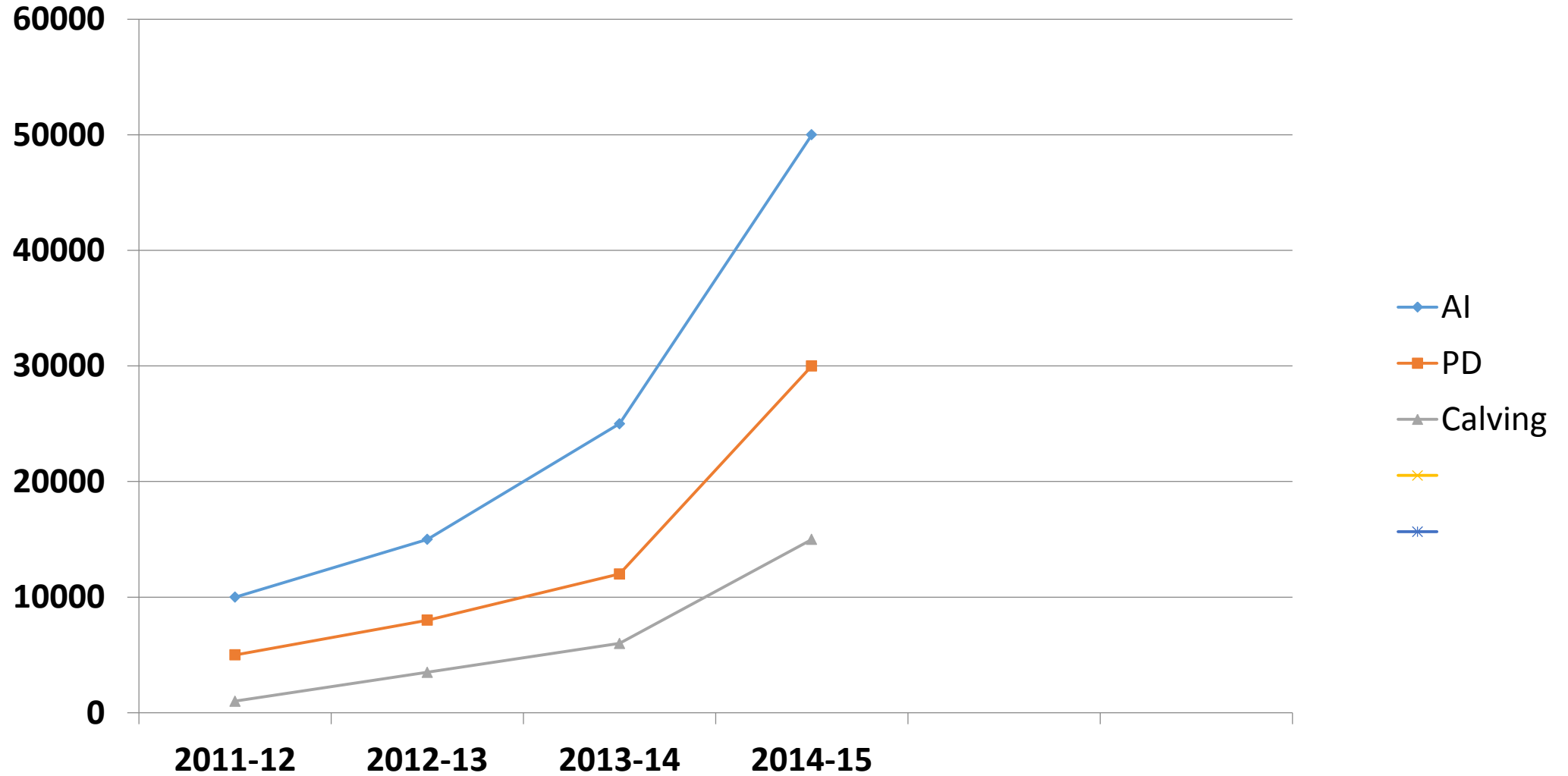
Milk Recordings

Year	General AI Project	Progeny Testing Program	Total
2011	1	8168	8169
2012	152	10086	10238
2013	182	11495	11677
2014	1034	14639	15673
2015	6637	19465	26102
2016	749	28842	29591

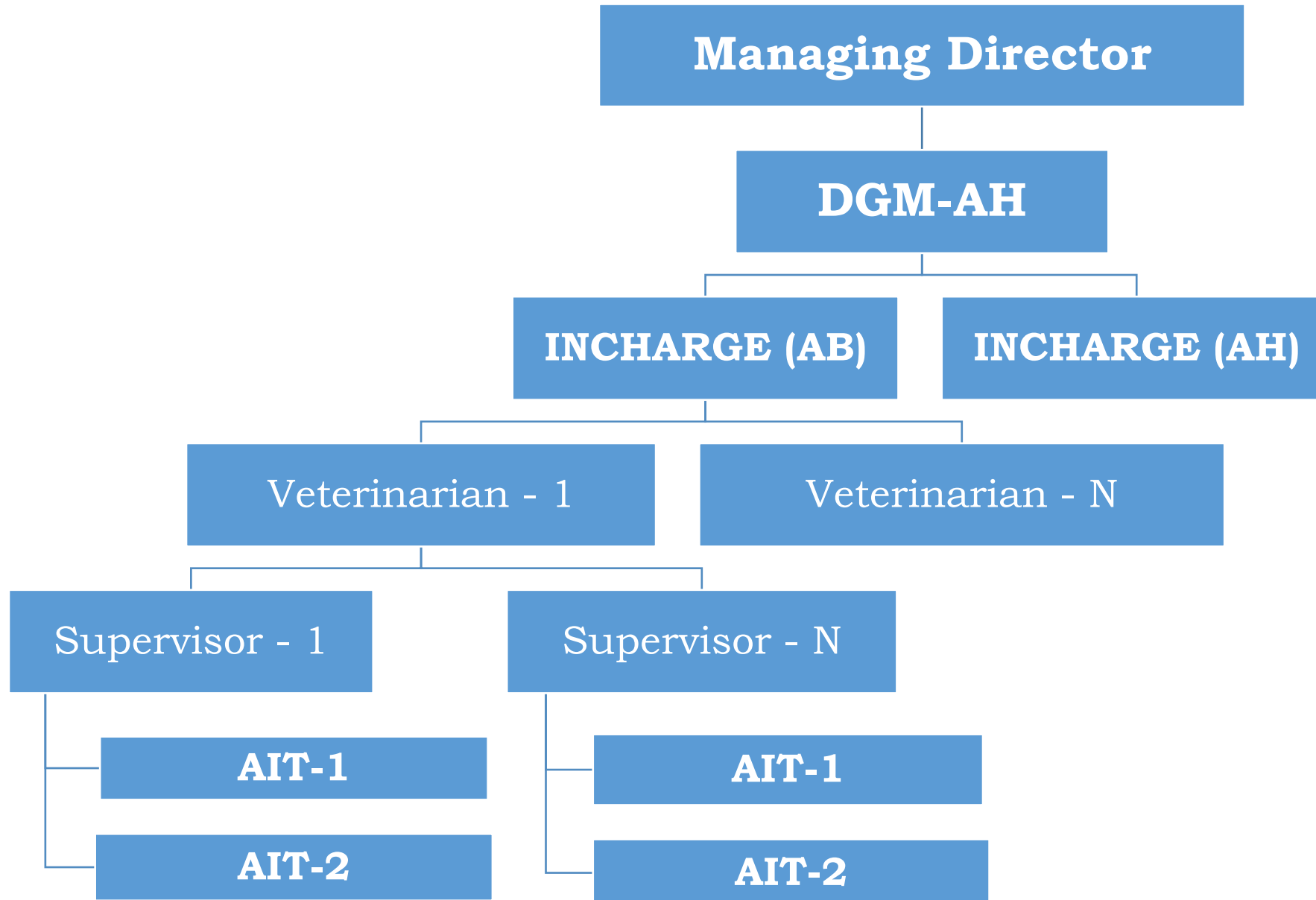
Average Delay (Days) in Data Entry of AI activities

Year	General AI Project	Progeny Testing Program	Average Delay (Days)
2011	167	49	108
2012	115	43	79
2013	66	26	46
2014	45	27	36
2015	49	25	37
2016	14	5	9.5

Breeding Activities



Work Force Hierarchy



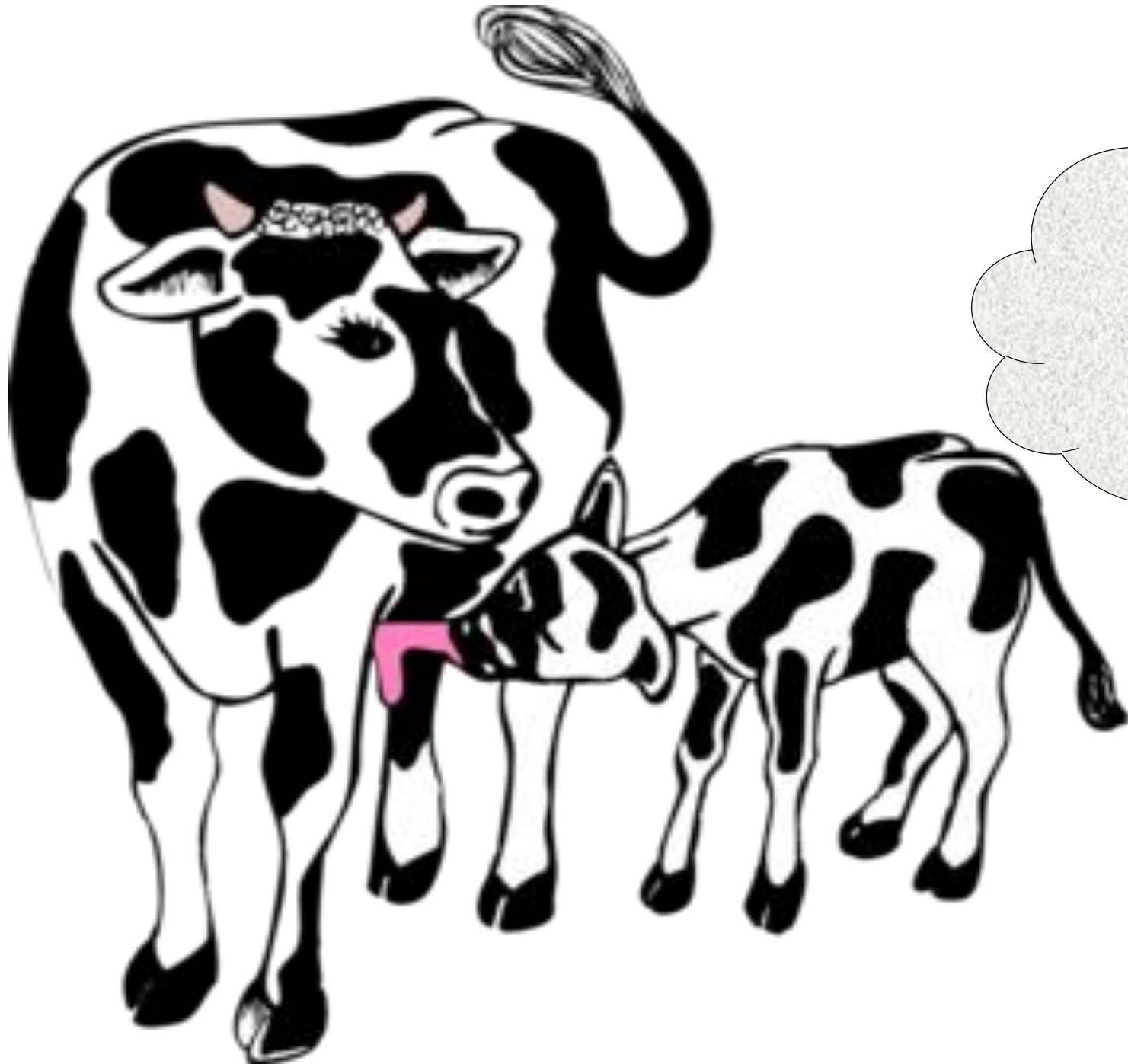
Incentives to the Field Users for recording of transactions in INAPH

- Registration of Animal and AI @ Rs.15 per AI
- Calving and Registration of new born female calf @Rs.50 per each Calving
- Internet Usage @Rs. 300 per Month

Expenses are borne by GCMMF and Sabar Kantha Milk Union

Progress of INAPH

- After Mass tagging and Registration in INAPH, Continuous data entry of all intervention done on animal is must for data bank. which needs....
 - Re-curing cost of tagging of newly purchase animal and new born female calf.
 - Cost of Instrument/device and internet usage for data entry.
 - Remuneration/Incentive expenditure for end-user/AIT.
 - Information pertaining to deaths and sale of animals from the farmers is not received and hence recorded as and when reported by the AITs during the visit to farmers' place for AI services.



THANKS
😊😊

